



Citizens for  
Safe Cycling  
Ottawa

Advocating for safer cycling since 1984

# Cycling Matters

Bay Ward and City of Ottawa

Meeting with Mark Taylor, June 4/15

# Today's Agenda

- Strategic Initiatives 2015-18 and funding of cycling infrastructure
- Needs and upcoming projects in Ward 7
- Citizens for Safe Cycling activities
- General discussion



Cycling Infrastructure

# FUNDING NOW AND IN FUTURE

# Strategic Initiatives

- Cycling capital projects were lumped into council's 'Strategic Initiatives' (S.I.) this year
- Due to commitments in the OCP, funding of capital works for cycling infrastructure should rightly be part of annual transportation budget—do you support that?

# 2015 Funding

- CfSC's position is that investment in cycling infrastructure should be proportional to the modal share of cycling in Ottawa (~2.5%)
- For a total transportation capital budget this year of \$327 Million, 2.5% is about \$8 Million

# 2015 Funding (2)

- The commitment in the S.I. just released is about \$2M for 2015 and subsequent years
- The TMP Phase 1 cycling projects (for 2015-18) do not include any in Bay Ward—is there any move to change that?
- Same for Community Connectivity projects...



Cycling Facilities

# NEEDS AND UPCOMING PROJECTS

# Carling CN Rail underpass

- Most important project, per your response to our election survey
- Have you any update on progress?





# Corkstown Road shoulder lanes

- Issue of edge-line paint on segment widened and repaved in 2014. (Status?)
- The segment (west of Moodie to the railway) under new traffic pressure from events at Wesley Clover Parks
- Opportunities for cycling to concert(s)

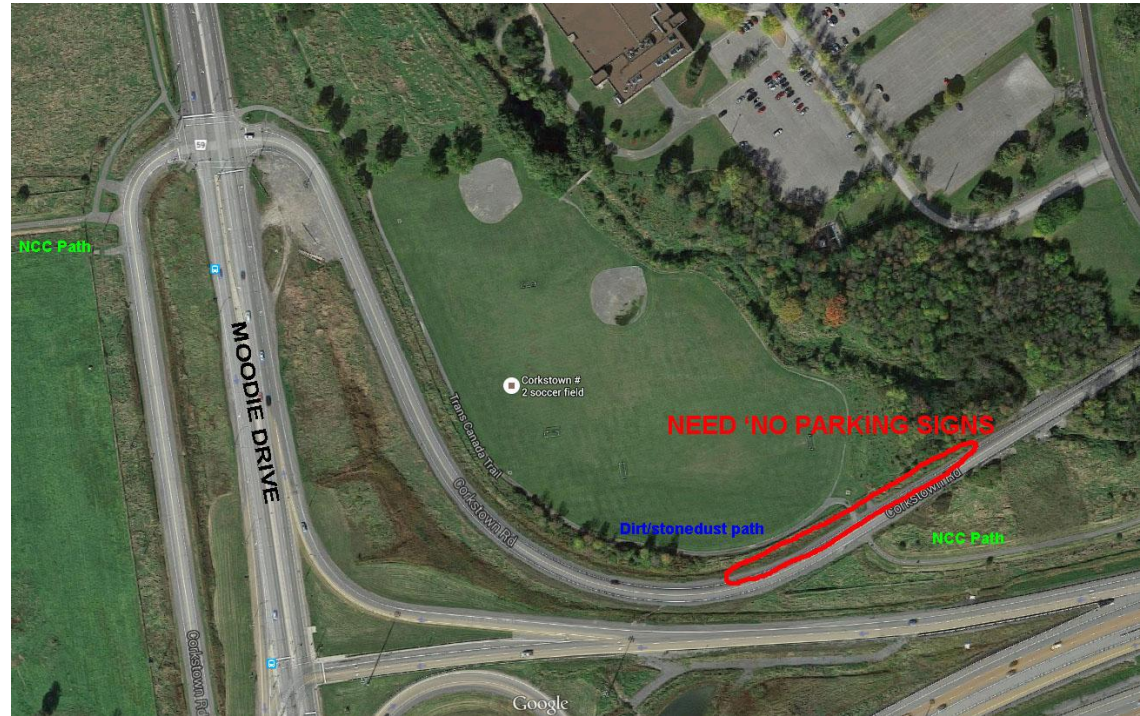
# Corkstown Road shoulder lanes (2)

Can widening  
be extended  
to east of  
Moodie, to  
the NCC  
pathway gate?



# Corkstown Road Quick Fixes

In interim,  
prohibit  
parking on  
north side of  
the road, in  
the zone  
circled.

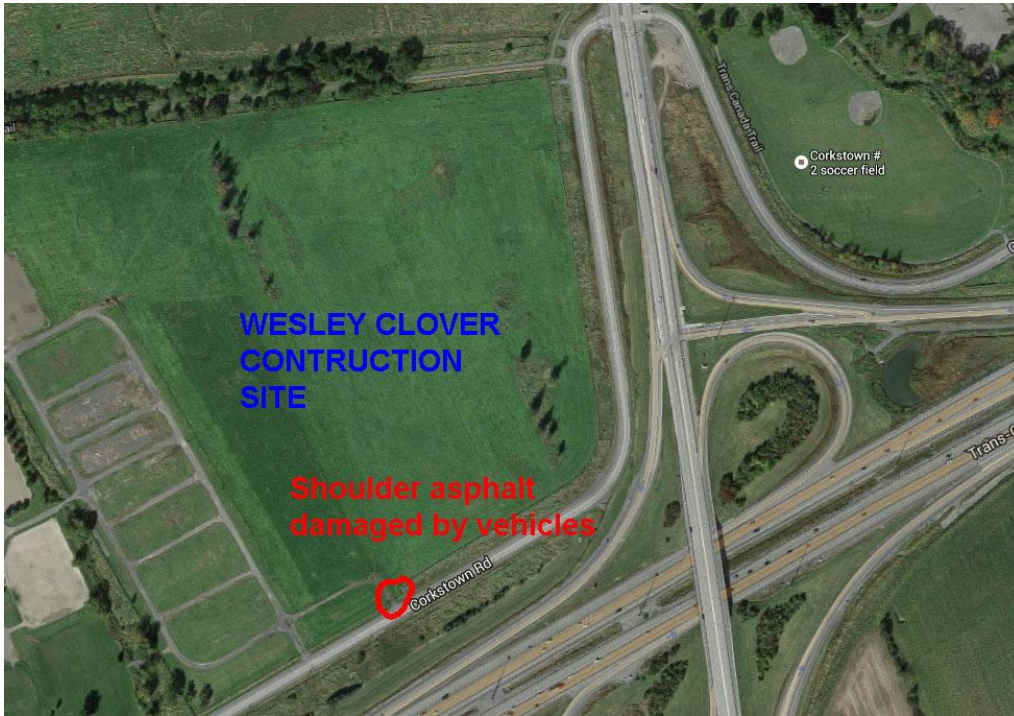


# Corkstown Road Quick Fixes (2)

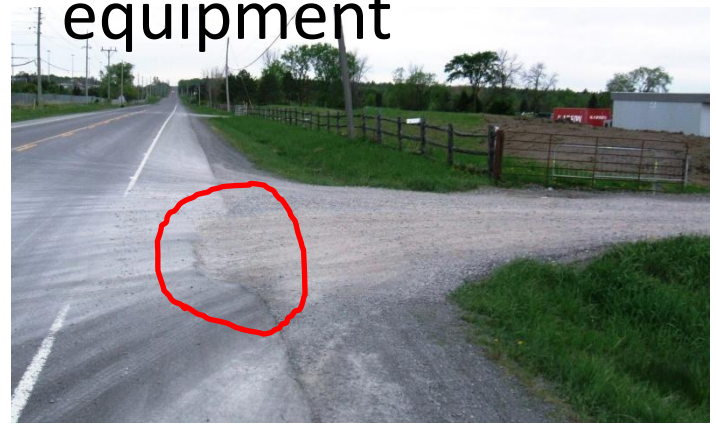
- Safety issue at path-road intersection
- Add taper to the asphalt to widen the entry



# Corkstown Road Quick Fixes (3)



New paved shoulder has been eroded by trucks or heavy equipment



# Richmond Road bike lanes/shoulders

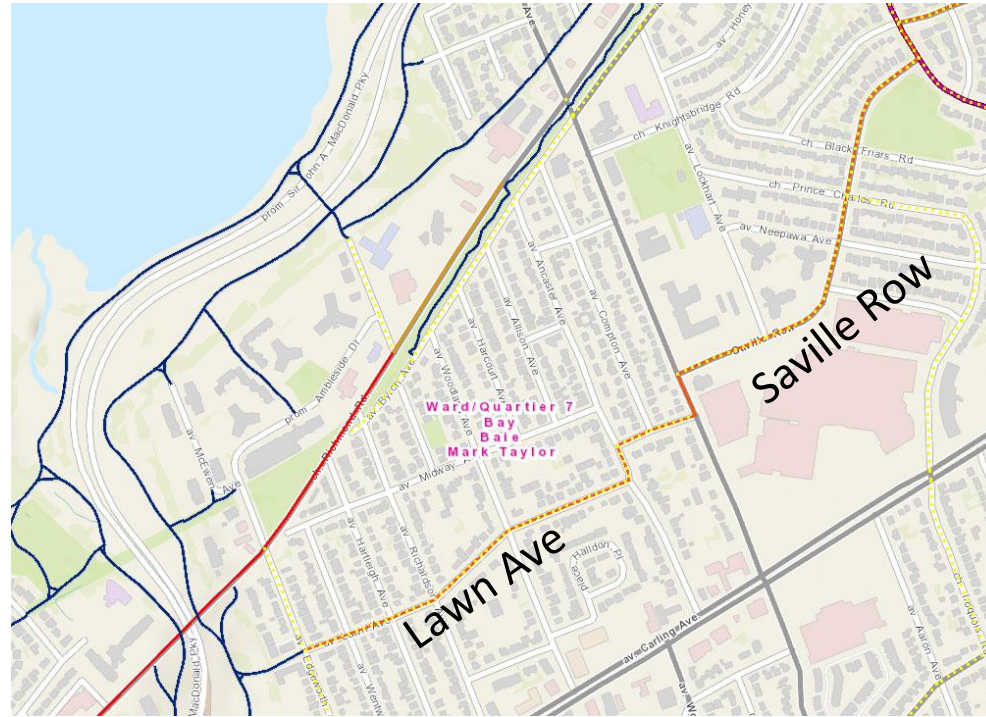
- Ottawa Cycling Plan OCP2013 project P2-5
- Currently, a tough route to cycle; worst section is between Highfield and Carling
- Need to consider accelerating this to sooner than 2020-25 period
- At least make pavement repairs, ASAP

# Ottawa Cycling Plan & Bay Ward

- The only other project within Bay Ward, as identified in OCP2013:
  - P1-24, “Westboro Neighbourhood Bikeway”
  - Name is a bit misleading!
- This does not appear in the new list of TMP Phase 1 projects—so not in the 2015-18 term!

# Westboro Neighbourhood Bikeway

PORTION  
IN BAY WARD



Sherbourne

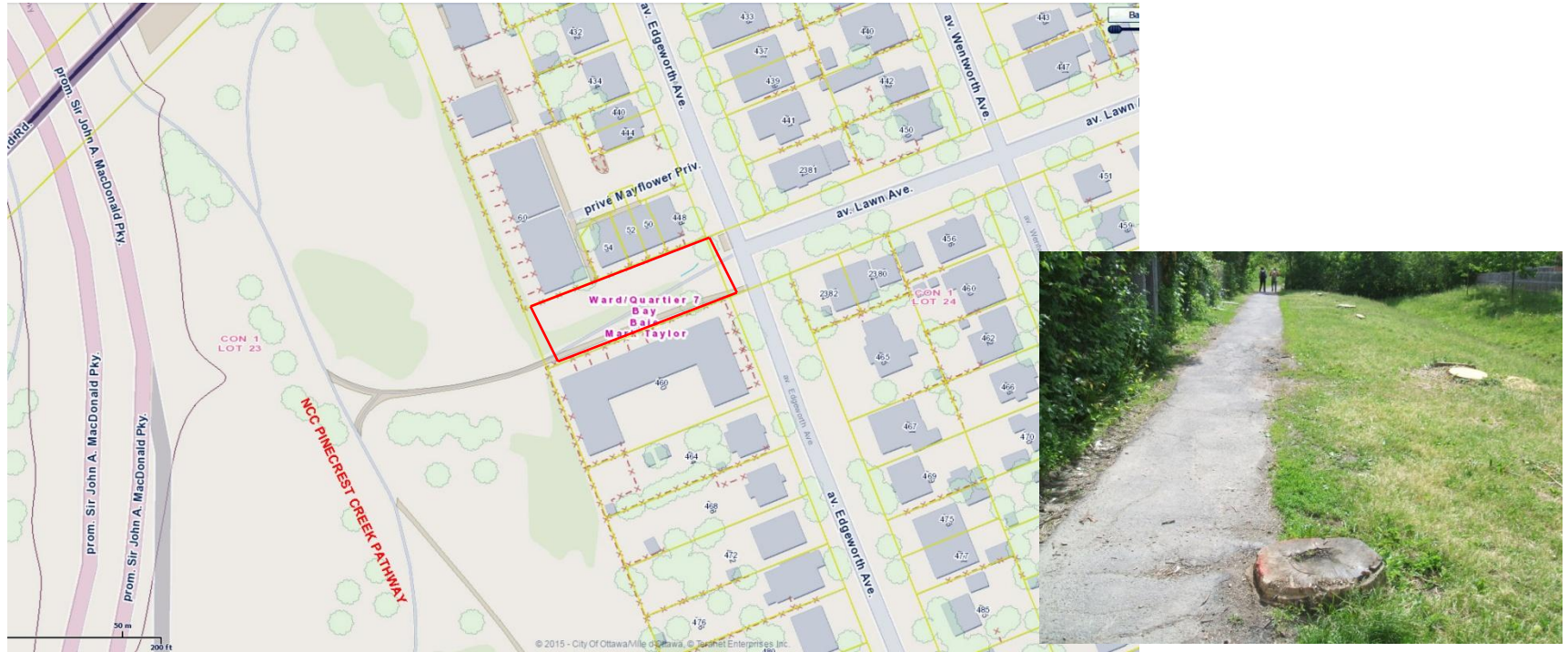


# Westboro Neighbourhood Bikeway

What has to be done to improve this connection to the NCC path?



# Ownership of this parcel?





Citizens for Safe Cycling

# **OTHER PROJECTS WE ARE FOLLOWING**

# Western LRT Extension

- We have produced a detailed commentary on the plans for Confederation Line extending from Lincoln Fields to Baseline and Bayshore
- Project highlights:
  - Cycling/walking bridge at Queensview LRT station
  - MUP additions leading to Iris LRT station

# Transitway – Bayshore to Moodie

- We are concerned about the decision to not grade-separate buses at Holly Acres— affects cyclists using this corridor’s pathways
- What measures will be designed for safe cycle crossing with short delay?
- How will Watts Creek Pathway be affected?

# Crossride at Carling

- We have been following operation of the crossride that opened in 2014



# Crossride at Carling (2)

- There is interference between people waiting on north side for signal and path users trying to pass through (between Andrew Haydon Park and Britannia)
- The city made a start on addressing this, but work is on hold, pending a re-design

# Crossride at Carling (3)

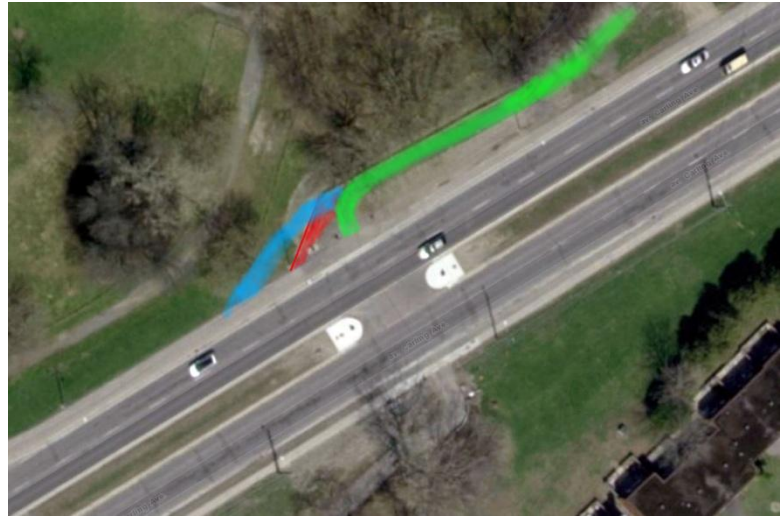
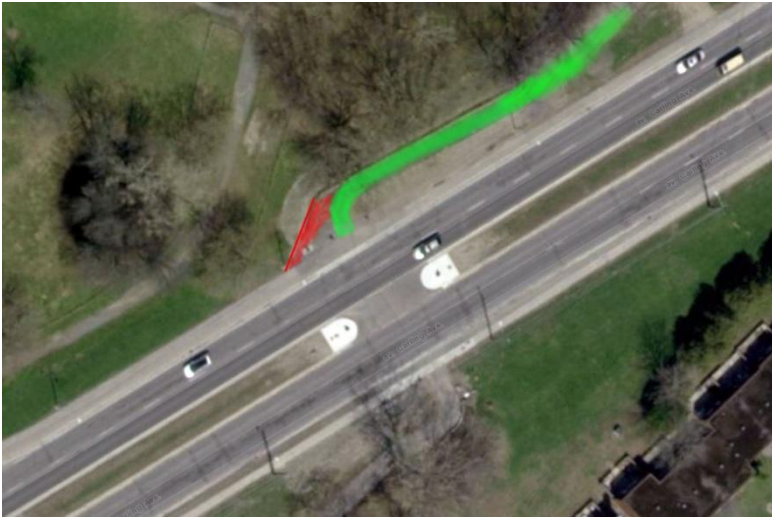
- This is the aborted attempt to make a pass-through lane on north side





# Crossride at Carling (4)

- Rather than this, we prefer extra path (blue)



# General discussion

- Any questions for us?
- Action plan
- Thank you