



Citizens for  
Safe Cycling  
Ottawa

Advocating for safer cycling since 1984

# Cycling Matters

College Ward and City of Ottawa

Meeting with Rick Chiarelli, May 27/15

# Why are we here?

- We cycle in College Ward a lot, and want to improve conditions for people who cycle here and throughout Ottawa
- We come to you in your capacity as:
  - Ward Councillor
  - Chair of IT Sub-committee

# Today's Agenda

- Funding infrastructure for cycling
- Upcoming projects in Ward 8
- Improving city's tools for maintenance requests (ServiceOttawa)
- Examples of maintenance needs in Ward 8
- General discussion



Cycling Infrastructure

# **FUNDING NOW AND IN FUTURE**

# Strategic Initiatives

- Cycling capital projects were lumped into council's 'Strategic Initiatives' (S.I.) this year
- Due to commitments in the OCP, funding of capital works for cycling infrastructure should rightly be part of annual transportation budget—do you support that?

# 2015 Funding

- CfSC asks that the investment in cycling infrastructure be proportional to the modal share of cycling in Ottawa (~2.5%)
- For a total transportation capital budget this year of \$327 Million, 2.5% is about \$8 Million
- Amount planned to invest out of the S.I.?

# Quotes from J Chianello column

- Ottawa Citizen, May 8, 2015
  - This exactly mirrors the budget process, and we all know how that works out: little discussion, virtually no changes. “The process is kind of weird,” admits veteran Coun. **Rick Chiarelli**. “Once something is presented as ‘the list,’ it gets really difficult to make changes.”
  - **Chiarelli** calls \$37 million for new strategic initiatives “rock bottom.” That amount does not begin to address the deficit in asset renewals — fixing and maintaining our city buildings, roads, sewers and parks — which clocks in at a minimum of \$65 million.
  - Perhaps the most egregious example is the inclusion as a strategic initiative of **\$4.6 million that is supposed to be spent this year on cycling and pedestrian infrastructure.**



Cycling Facilities

# UPCOMING PROJECTS



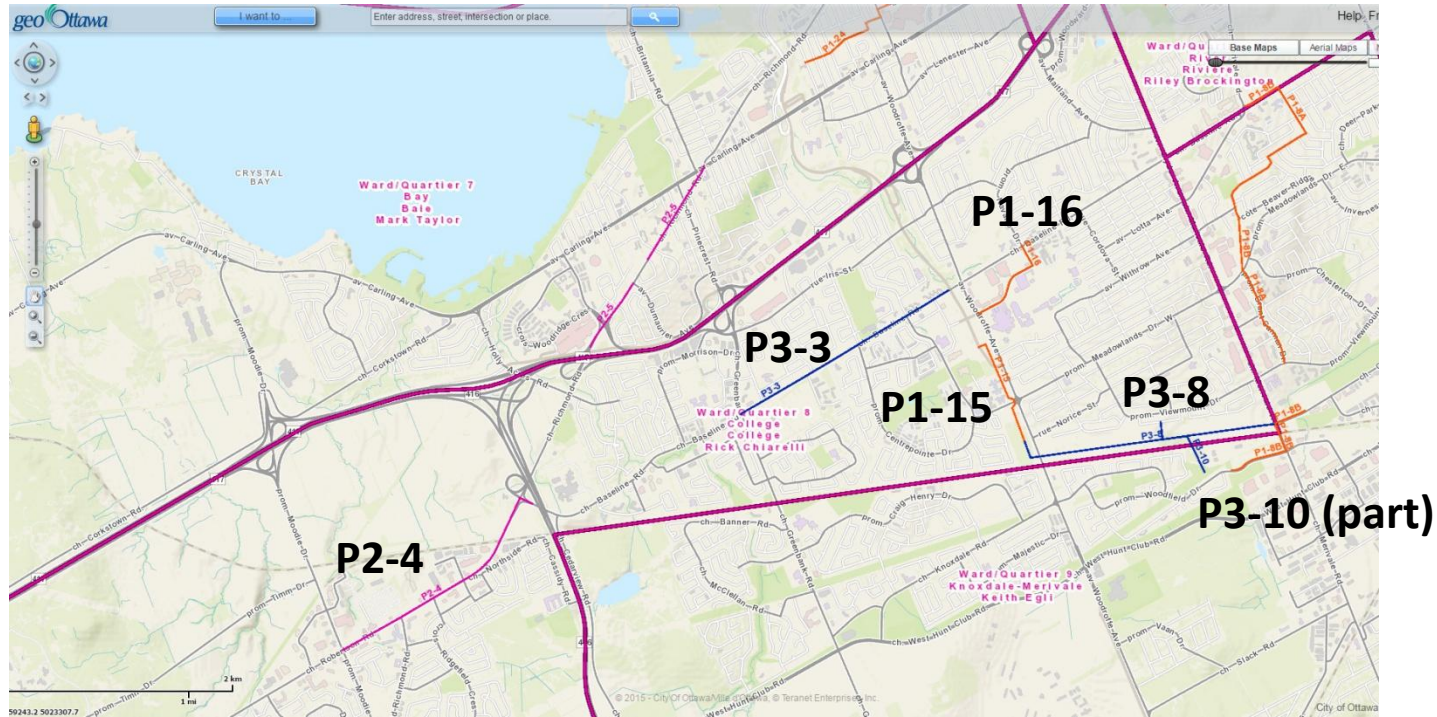
# Most important project?

- What does the councillor see as the #1 priority for cycling infrastructure in College Ward?
- We can provide some suggestions!
- A number of issues we've discussed in previous meetings remain unresolved...

# Ottawa Cycling Plan & Ward 8

- Let us start with the projects identified in the OCP, as updated in 2013
- A total of \$70 Million was identified to be spent throughout the city from 2014 to 2031, or an average of \$3.89M per year in 18 years

# 'Affordable Cycling Network': Ward 8



# Projects per the Ottawa Cycling Plan

- P1-15 (phase 1, 2014-2019)
  - Woodroffe Pathway – Norice St to College Ave (west side of Woodroffe)
  - *Will it link with pathway from Pinetrail Cres?*
  - *How will northbound cyclists on Woodroffe bike lane at railway underpass get to it?*

# Projects per the Ottawa Cycling Plan

- P1-16 (phase 1, 2014-2019)
  - Bike lanes on Navaho Dr – Woodroffe Ave to Baseline Rd. (Note: BRRT project Phase 1 only starts in 2019 in this area, so will bike lanes really be done before?)
  - *Issues at both ends:*
    - *Lanes and signalization for crossing Baseline*
    - *Navaho west of Woodroffe has to be opened to cycling; currently a buses-only road where it crosses Transitway*

# Navaho at Baseline

- The repaving in 2014 included stubs up Navaho (both ways)
- Why were bike facilities missed? (Bike boxes for straight-through movement, bike detection loops.)



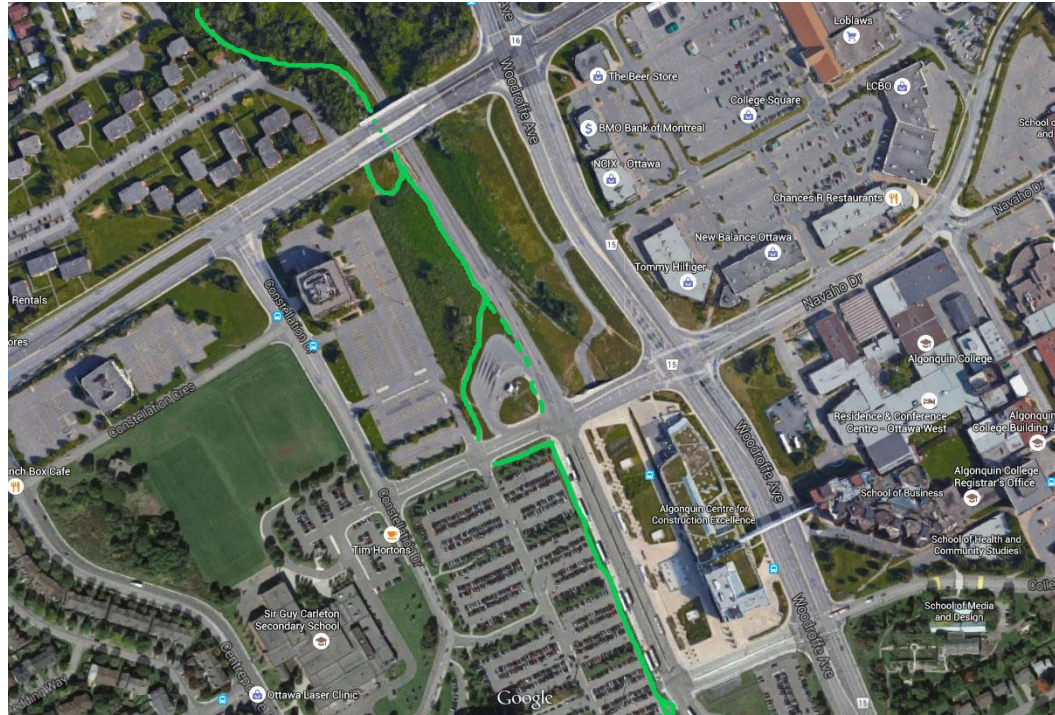
# Navaho at Transitway

- Need to ask OTranspo General Manager to authorize exception to permit cycling



# Navaho at Transitway – aerial view

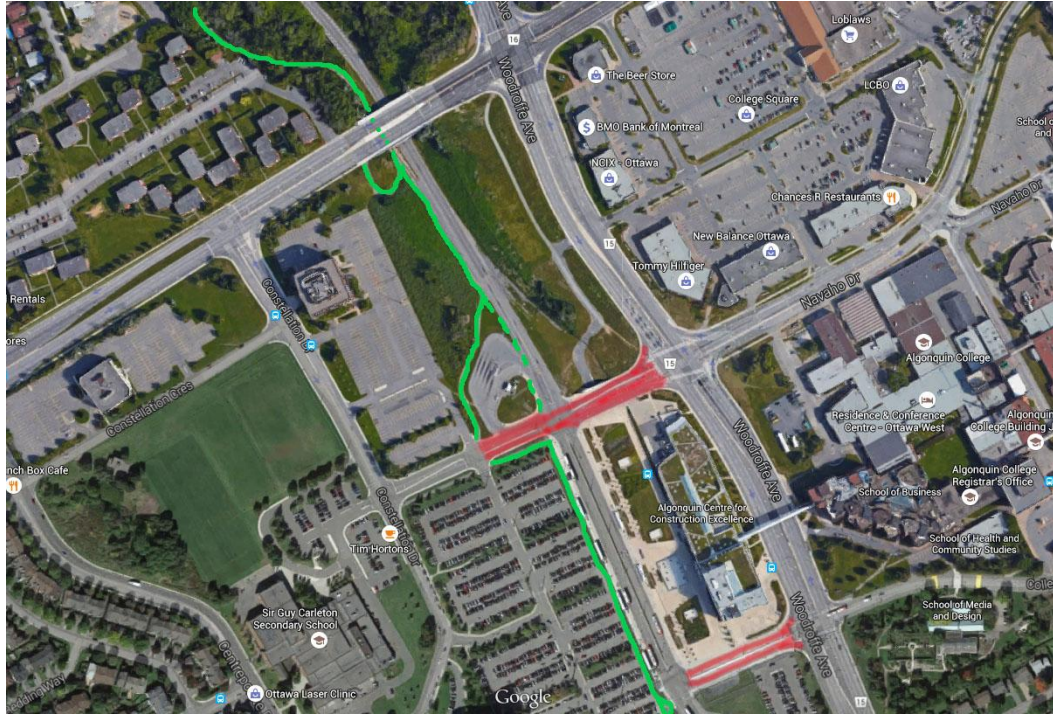
Pathways  
("MUPs") are  
shown in green





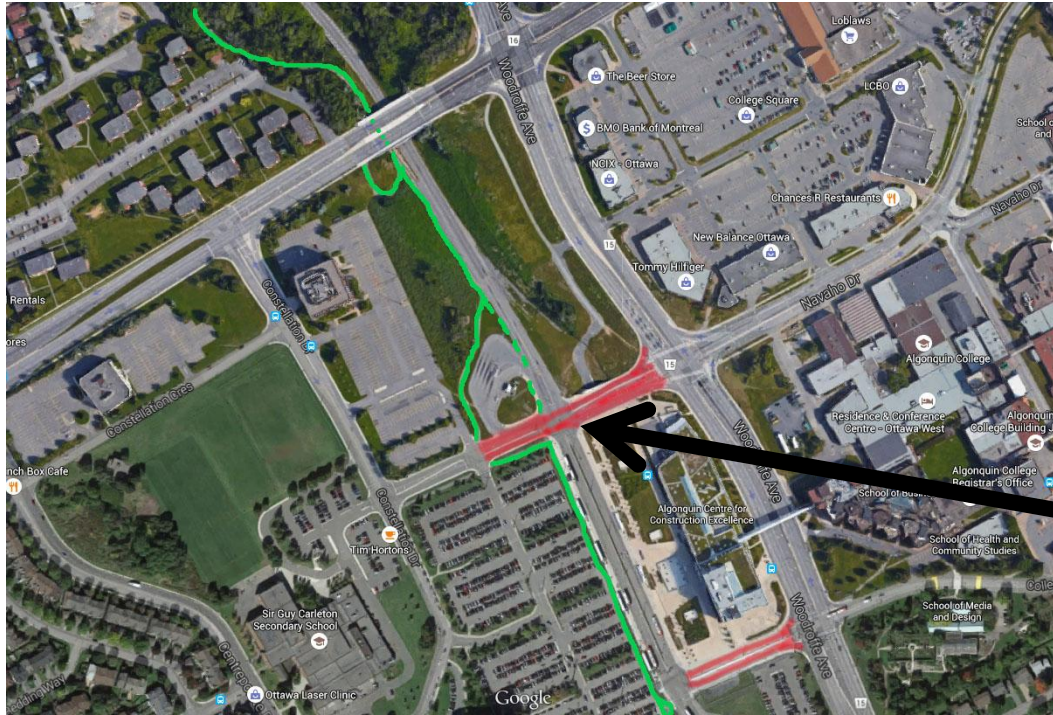
# Navaho at Transitway – aerial view

The red lines are roads (and adjacent sidewalks) where it is prohibited to ride one's bike



# Navaho at Transitway – aerial view

The red lines are roads (and adjacent sidewalks) where it is prohibited to ride one's bike



This intersection is already a four-way stop

# Navaho at Transitway – aerial view



# Projects per the Ottawa Cycling Plan

- P2-4 (phase 2, 2020-2025)
  - Robertson Rd – Moodie Dr to Baseline Rd
  - Segregated Bike Facility (part of cross-town bikeway)
  - *Is the Bells Corners BIA planning for this?*
  - *What about its continuation west to Moodie, as far as the MUP on the old CPR rail line?*

# Terror near the railway underpass

- Project timing means enduring 6-10 more years of:
  - dangerous passes by motorists on Robertson (Baseline to Northside/Thornccliffe), and/or
  - illegal riding on seriously degraded “sidewalk”
- Something must be done to fix situation if project can't be fast-tracked

# Robertson Road sidewalk images



Puddles highlight  
the poor surface  
conditions

# Projects per the Ottawa Cycling Plan

- P3-3 (phase 3, 2026-2031)
  - Baseline Rd – Woodroffe Ave to Greenbank Rd
  - Segregated Bike Facility
  - *Baseline Road Rapid Transit (BRRT) corridor changes in this sector (Constellation-Richmond) are scheduled in its phase 1 (2019-2023), so why not add the bicycle facility then?*

# Projects per the Ottawa Cycling Plan

- P3-8 (phase 3, 2026-2031)
  - Nepean Creek Pathway (Woodroffe to Merivale)
  - Listed to address ‘Missing Links’
  - *Much more direct than Norice-Viewmount route, for linking to P1-8 (‘Nepean Trail’)*
  - *This area is under consideration for the second Maintenance and Storage Facility (MSF) of the LRT system! Let’s not lose it to that function.*

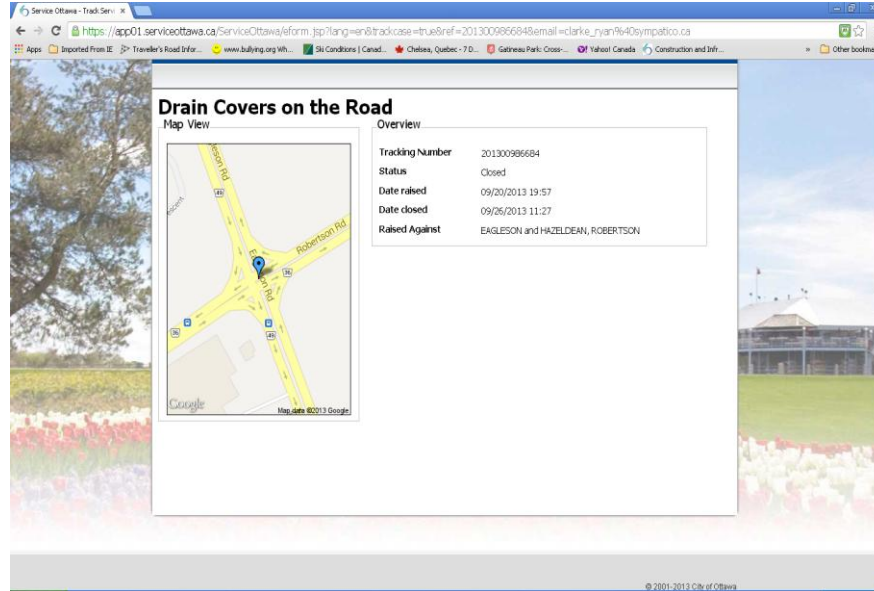


# Projects per the Ottawa Cycling Plan

- P3-10 (phase 3, 2026-2031)
  - Nepean Northwest Neighbourhood Bikeway (Pathway segments only)
  - *Joins the Nepean Creek Pathway (previous slide) to Viewmount via Parkside Cres., a good linkage*
  - *How will this MUP cross the rail line to reach Ward 9?*

# Western LRT Extension

- We have just produced a detailed commentary on the plans for Confederation Line extending from Lincoln Fields to Baseline and Bayshore
- Project highlights:
  - Cycling/walking bridge at Queensview LRT station
  - MUP additions leading to Iris LRT station



ServiceOttawa

# IDEAS FOR IMPROVEMENT

# Improve ServiceOttawa

- The “new” alternative to 3-1-1 for reporting road/path/signal problems should be better geared for use by cyclists and others
- We have sought action from staff in ServiceOttawa, to hear our suggestions for improvement—no response to a meeting request

# Improve ServiceOttawa (2)

- Examples: ServiceOttawa web “app” needs:
  - Provision for reporting such things as
    - Catch basin grate problems
    - Faded/missing road markings
    - Signal detection not working for bicycles
  - Better usability
  - Better trackability for users to follow progress

# Improve ServiceOttawa (3)

- Can you connect us to personnel who have authority and budget to make the necessary upgrades?



Cycling in College Ward

# MAINTENANCE ISSUES

# Maintenance issues

- Places where College Ward roads and paths are chronically failing cyclists
- We will give a few examples here
- Some may have jurisdictional confusion
- Can an ongoing focus on these be initiated between us and your staff?



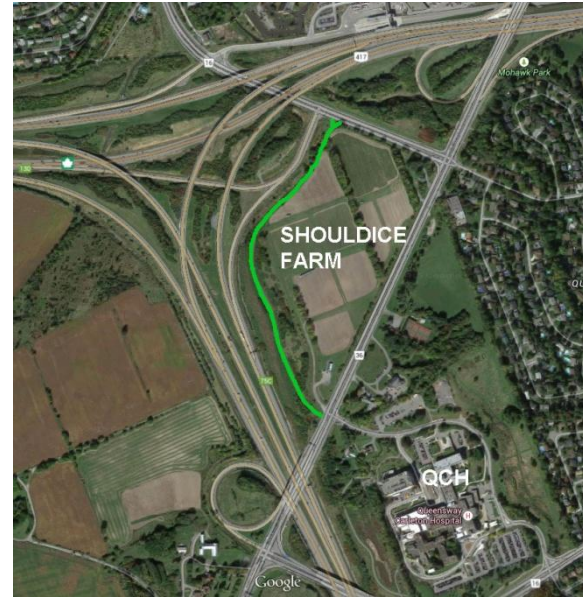
# Robertson Road near Baseline

- Both the road and the sidewalk are in terrible shape, patches don't last!



# Pathway: Holly Acres-Richmond

- Which jurisdiction is responsible for maintenance?



# Pathway: QCH at Richmond Rd



Permanent fix is needed!

# Highway runoff - Holly Acres path

- Outflows from storms flow across Holly Acres MUP (north side of road)
- Considerable mud and debris are regularly left on MUP; permanent fix is needed



# Baseline work just after paving?!!!

- New asphalt applied in summer 2014 was drilled in autumn 2014. Who planned this?



# Upcoming resurfacing

- What are dates for repaving:
  - Iris, from Pinecrest to Woodroffe
  - Meadowlands, from Woodroffe to Thatcher
  - Centrepointe MUP
- Pavement on these routes is very bad for cycling

# General discussion

- Any questions for us?
- Action plan
- Thank you